

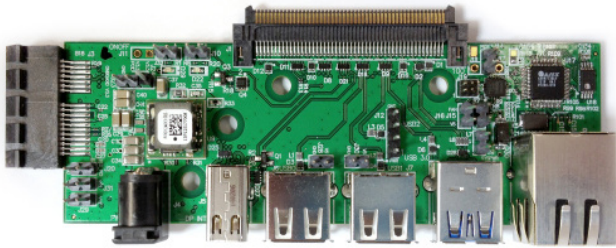
# M3 PCB

## PRODUCT OVERVIEW

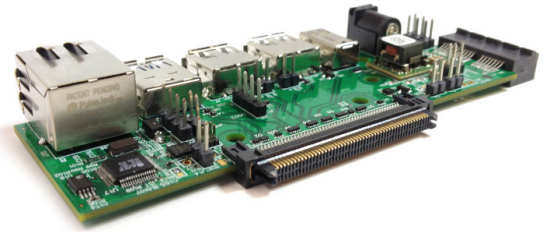
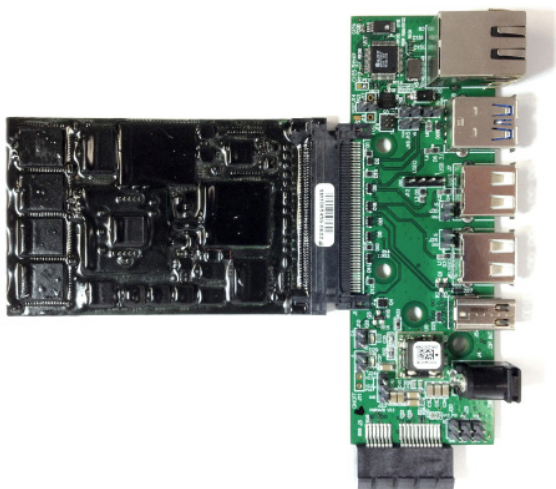
ADDC has developed micro-form factor docking station for use within integrated products such as monitors, tablets, TVs, and micro client set ups. Utilizing a small energy footprint, the M3 is the easiest way to integrate into larger platforms while maintaining standard connections.

The M3 docking station comes complete with a BioDigitalPC® docking connection, one USB 3.0 port, two USB 2.0 ports, one 4-pin USB 2.0 header, 10/100 Ethernet (RJ-45) connector, PCIe x1 (connector optional), 12VDC power in connector and Mini DP++ video out connector. Power pins are provided in order to power the PCIe per the use specifications.

The BioDigitalPC® card is a revolutionary computing system which will allow for maximum flexibility with a minimum footprint for size, weight, and energy consumption.



**The M3 is compatible with all of the BioDigitalPC® products.**



### FEATURES:

- (1) USB 3.0 port\*\*
- (2) USB 2.0 ports
- (1) 4-pin USB 2.0 connectors
- (1) RJ45 10/100 Mbps Ethernet Connector
- PCIe x1(optional)
- 12VDC input power
- Mini DisplayPort++ (HDMI capable)
- Reset/On-Off Header
- 1A DC-DC converter for the 3.3V required by the Mini-DP++ and PCIe x1 (connector optional)
- Header pins for 5V fan (x2: standard 2.54mm pitch)
- Red LED indication for 5V power.
- Green LED indication for Card Detect.
- 100-pin Connector for BioDigitalPC®
- 4mm mounting holes(4)
- Headers for externally supplied PCIe standard voltages

\*\*Requires minimum BioDigitalPC®7

### DIMENSIONS

113mm x 48mm x 12.5mm